

**250+ Products
for Solutions**

Catalog of innovative, high-quality, tailored products.

Ceres Turf, Inc.



CTI
CATALOG
2026



P.O. BOX 12447
WILMINGTON, NC
28405

WWW.CERESTURF.COM
(910) 256-8974

TABLE OF CONTENTS

Viper Quads	3
Selecting the Right Tines	4
Conventional Aerification Tines	
Toro/John Deere - 3/8" Mounts	5-8
Toro/John Deere - 3/4" Mounts	9-12
Toro/John Deere - 7/8" Mounts	13
Ryan GA (Jacobsen) - 1/2" Mounts	14
Deep Tines	
Redexim Verti-Drain - 5/16", 12mm, 18mm, 24mm Mounts	15-17
Toro SR - 12mm, 18mm Mounts	18
Wiedenmann - 5/16", 12mm, 18mm, Mounts	19-20
Wiedenmann - 1:4, 1:10, Threaded Mounts	21
Bedknives	
Phoenix Extreme Ad	22
Phoenix Extreme or Toro	23
Toro Bedknives	24-25
Phoenix Extreme or John Deere	26
John Deere Bedknives	27-28
Jacobsen Bedknives	29
Reels	
Toro Reels	30
John Deere Reels	31
Jacobsen	32
Rotary Mower Blades from Oregon	
Rotary Mower Blades	33
Rotary Mower Blades Other Products	34
Specialty Parts	35-37
Warranty	38
Notes	39
Ceres Cottage	40



VIPER NOSE®

CTI

Vipers

A GROUND BREAKING FAMILY



Read on to see why
so many have moved to
Viper Quads instead of
round nose Quads!

910-256-8974
www.ceresturf.com

CTI

Ceres Turf, Inc.
P.O. Box 12447
Wilmington, NC 28405

THINGS TO CONSIDER *BEFORE* YOU ORDER TINES

1. **What size and type of tine do you want?** Do you plan to only aerify greens or include collars, apron and tee boxes; or perhaps fairways too? Each location poses an increasing degree of potential abrasion and risk of tine failure. A tine may be perfect for greens but a failure on tees due to size or wall thickness (strength).
2. **Tines are like a 'finger print' since they tell you so much about how an aerifier is performing.** If an aerifier is in need of a complete 'refurb', the tines will show excessive side wear. If the tine is 'dragging' it will show more 'side wear' at the tip and the mouth of the hole will be elongated. Dragging is caused when an aerifier moves too fast for the length of the tine. Check the 'head', if there is more than an inch of 'play', there could be a problem.
3. **Know what tines have been previously used and to what depth?** If you want to use a 6" coring tine to full depth but have never cored below 3", there will be consequences. The top 3" would be loose, granular and there is likely a 'hard pan' at the 3" level resulting in significant increases in abrasion and possible breakage. Each 1/2" below the lowest previous core-level increase the abrasion resulting in reduced longevity. A good 'rule of thumb' is 1" additional depth below will reduce the life by 25-35%.
4. **Know the aerification history and expectation?** Is longevity a primary issue or is improved agronomics the primary goal? CTI may have four or five very different tines of nearly identical size, but with vastly different performance. A carbide tipped tine will offer significant longevity, but with significantly less material removed and a longer 'grow-in'. CTI VIPER tines provide an excellent 'cut' and core with little chance of 'plugging'.
5. **What is the 'soil profile' down to a depth of 8 inches?** How much thatch is there? **When was the last 'rebuild'?** Do you have 'USGA Spec' greens and fairways? Is there a 'black layer', rocks, or a significant organic layer with 'sealing off'?
6. **What aerifier do you have? How is it used?** The 'pattern' used when aerifying can be a determinant factor. What is the tine 'spacing'? A Toro 648 run at high speed will wear out a 6" tine much faster than if set at 2650 RPM.
7. **What is the wall thickness of the coring tines?** Using 0.072" as a benchmark, one should get 8-12 greens with a 5" tine going to 3" in core depth at a moderate speed and standard abrasion. A thicker wall, say 0.095" would significantly increase the longevity. A carbide tip should complete all 18 greens under normal conditions. Thinner walls reduce longevity at a significant rate as does an increased core depth.
8. **The 'type' of sand and level of topdressing** is a determinate. The amount of abrasion between different sands can reduce the tine life by as much as 50% or more.
9. **The 1/8" and the new 1/5" VIPER Quad tines** offer excellent thatch and organics removal, they should last all 18 greens if only pushed to 1-1.5". If used to the full core depth (3.3") the longevity can be anywhere from 4 to 9 greens on average. A Phoenix option offers increased longevity by 50-100%. CTI recommends running the Toro 648 at no more than 2800 RPM.

When in doubt, call our office and ask a Technical Support Representative for guidance; we will be glad to help. We know our tines and a little information could save you time and expense. +1 910-256-8974

(will fit) **JOHN DEERE® / TORO**



JOHN DEERE® / TORO
(will fit)

3/8" Mount

Part #	Core Diameter	Total Length	Outside Diameter	Wall Thickness
--------	---------------	--------------	------------------	----------------

VIPER NOSE MINI QUADS

For Use in Organic Layer Only

1QV-133537	.160" / 4.1mm	3.5" / 88.9mm	.275" / 7.0mm	.040" / 1.0mm
1QV-134337	.160" / 4.1mm	4.36" / 110.7mm	.275" / 7.0mm	.040" / 1.0mm
1QV-204337	.196" / 5.0mm	4.36" / 110.7mm	.315" / 8.0mm	.040" / 1.0mm



VIPER NOSE QUAD TINES

1QV-253537	.250" / 6.4mm	3.5" / 88.9mm	.376" / 9.6mm	.063" / 1.6mm
1QV-255037	.250" / 6.4mm	5" / 127.0mm	.376" / 9.6mm	.063" / 1.6mm
1QV-375037	.310" / 7.9mm	5" / 127.0mm	.454" / 11.6mm	.072" / 1.8mm
1QV-376037	.310" / 7.9mm	6" / 152.4mm	.454" / 11.6mm	.072" / 1.8mm
1QV-525037	.418" / 10.6mm	5" / 127.0mm	.562" / 14.3mm	.072" / 1.8mm
1QV-526037	.418" / 10.6mm	6" / 152.4mm	.562" / 14.3mm	.072" / 1.8mm
1QV-625037	.481" / 12.2mm	5" / 127.0mm	.625" / 15.9mm	.072" / 1.8mm
1QV-626037	.481" / 12.2mm	6" / 152.4mm	.625" / 15.9mm	.072" / 1.8mm
1QV-755537	.500" / 12.7mm	5.5" / 139.7mm	.644" / 16.4mm	.072" / 1.8mm

TOLL FREE 866-929-9916 PHN 910-256-8974

JOHN DEERE® / TORO (will fit)

JOHN DEERE® / TORO (will fit)



3/8" Mount

Part #	Core Diameter	Total Length	Outside Diameter	Wall Thickness
PREMIUM QUAD TINES				
1Q-255037	.266" / 6.8mm	5" / 127.0mm	.392" / 10.0mm	.063" / 1.6mm
1Q-375037	.310" / 7.9mm	5" / 127.0mm	.454" / 11.6mm	.072" / 1.8mm
1Q-376037	.310" / 7.9mm	6" / 152.4mm	.454" / 11.6mm	.072" / 1.8mm
1Q-525037	.418" / 10.6mm	5" / 127.0mm	.562" / 14.3mm	.072" / 1.8mm
1Q-526037	.418" / 10.6mm	6" / 152.4mm	.562" / 14.3mm	.072" / 1.8mm
1Q-625037	.481" / 12.2mm	5" / 127.0mm	.625" / 15.9mm	.072" / 1.8mm
1Q-626037	.481" / 12.2mm	6" / 152.4mm	.625" / 15.9mm	.072" / 1.8mm



CARBIDE QUAD TINES

1QC-255037	.250" / 6.4mm	5" / 127.0mm	.380" / 9.7mm	.065" / 1.7mm
1QC-375037	.325" / 8.3mm	5" / 127.0mm	.455" / 11.6mm	.065" / 1.7mm
1QC-376037	.325" / 8.3mm	6" / 152.4mm	.455" / 11.6mm	.065" / 1.7mm
1QC-525037	.400" / 10.2mm	5" / 127.0mm	.530" / 13.5mm	.065" / 1.7mm
1QC-526037	.400" / 10.2mm	6" / 152.4mm	.530" / 13.5mm	.065" / 1.7mm
1QC-625037	.465" / 11.8mm	5.3" / 134.6mm	.609" / 15.5mm	.072" / 1.8mm
1QC-626037	.465" / 11.8mm	6" / 152.4mm	.609" / 15.5mm	.072" / 1.8mm



Solid L-Shaped Needle Tines



Toro

Part #	Diameter	Length
2E-206520	.1875" / 4.8mm	6.5" / 165.1mm
2E-317531	.3125" / 7.9mm	7.5" / 190.5mm

John Deere

2E-204920	.1875" / 4.8mm	4.875" / 123.8mm
2E-314931	.3125" / 7.9mm	4.875" / 123.8mm

3/8" Mount

Solid Round Tines



2-204537	.20" / 5.1mm	4.5" / 114.3mm
2-205537	.20" / 5.1mm	5.5" / 139.7mm
2-254037	.25" / 6.4mm	4" / 101.6mm
2-255037	.25" / 6.4mm	5" / 127.0mm
2-256037	.25" / 6.4mm	6" / 152.4mm
2-375037	.375" / 9.5mm	5" / 127.0mm
2-376037	.375" / 9.5mm	6" / 152.4mm
2-506037	.50" / 12.7mm	6" / 152.4mm
2-626037	.625" / 15.9mm	6" / 152.4mm

JOHN DEERE® / TORO® (will fit)

JOHN DEERE® / TORO® (will fit)

3/8" Mount (continued)

Solid Talon Tines



Part #	Diameter	Length
2T-376037	.375" / 9.5mm	6" / 152.4mm
2T-504737	.5" / 12.7mm	4.75" / 120.7mm
2T-506037	.5" / 12.7mm	6" / 152.4mm

Solid Venting Tines



2V-626037	.625" / 15.9mm	6" / 152.4mm
2V-755037	.75" / 19.1mm	5" / 127.0mm
2V-756037	.75" / 19.1mm	6" / 152.4mm
2V-757037	.75" / 19.1mm	7" / 177.8mm

(will fit) **JOHN DEERE® / TORO®**



JOHN DEERE® / TORO®

(will fit)

3/4" Mount



Part #	Core Diameter	Total Length	Outside Diameter	Wall Thickness
TUBULAR TOP-EJECT ALLOY CORING TINES				
1-505575	0.400" / 10.2mm	5.5" / 139.7mm	.544" / 13.8mm	.072" / 1.8mm
1-625575	0.490" / 12.4mm	5.5" / 139.7mm	.634" / 16.1mm	.072" / 1.8mm
1-626075	0.490" / 12.4mm	6" / 152.4mm	.634" / 16.1mm	.072" / 1.8mm



VIPER NOSE

VIPER NOSE CORING TINES

1SV-505075	0.398" / 10.1mm	5" / 127.0mm	.542" / 13.8mm	.072" / 1.8mm
1SV-506075	0.398" / 10.1mm	6" / 152.4mm	.542" / 13.8mm	.072" / 1.8mm
1SV-625075	0.478" / 12.1mm	5" / 127.0mm	.622" / 15.8mm	.072" / 1.8mm
1SV-626075	0.478" / 12.1mm	6" / 152.4mm	.622" / 15.8mm	.072" / 1.8mm



MACHINE ALLOY SIDE-EJECTS CORING TINES

1S-375575	0.285" / 7.2mm	5.5" / 139.7mm	.429" / 10.9mm	.072" / 1.8mm
1S-505075	0.398" / 10.1mm	5" / 127.0mm	.542" / 13.8mm	.072" / 1.8mm
1S-506075	0.398" / 10.1mm	6" / 152.4mm	.542" / 13.8mm	.072" / 1.8mm
1S-624575	0.478" / 12.1mm	4.5" / 114.3mm	.622" / 15.8mm	.072" / 1.8mm
1S-625075	0.478" / 12.1mm	5" / 127.0mm	.622" / 15.8mm	.072" / 1.8mm
1S-626075	0.478" / 12.1mm	6" / 152.4mm	.622" / 15.8mm	.072" / 1.8mm

TOLL FREE 866-929-9916 PHN 910-256-8974

JOHN DEERE® / TORO® (will fit)

JOHN DEERE® / TORO® (will fit)

3/4" Mount (continued)



Part #	Core Diameter	Total Length	Outside Diameter	Wall Thickness
--------	---------------	--------------	------------------	----------------

CARBIDE CORING TINES

1CS-375075	.270" / 6.9mm	5" / 127.0mm	.400" / 10.2mm	.065" / 1.7mm
1CS-376075	.270" / 6.9mm	5.75" / 146.1mm	.400" / 10.2mm	.065" / 1.7mm
1CS-505075	.400" / 10.2mm	5" / 127.0mm	.530" / 13.5mm	.065" / 1.7mm
1CS-506075	.400" / 10.2mm	5.75" / 146.1mm	.530" / 13.5mm	.065" / 1.7mm
1CS-625075	.480" / 12.2mm	5" / 127.0mm	.610" / 15.5mm	.065" / 1.7mm
1CS-626075	.480" / 12.2mm	5.75" / 146.1mm	.610" / 15.5mm	.065" / 1.7mm
1FCH-816075	.490" / 12.4mm	6" / 152.4mm	.700" / 17.8mm	.105" / 2.7mm
1FC-756075	.490" / 12.4mm	6" / 152.4mm	.700" / 17.8mm	.105" / 2.7mm



ECONOMY CORING TINES

1E-755775	.620" / 15.7mm	5.75" / 146.1mm	.875" / 22.2mm	.134" / 3.4mm
1E-625775	.540" / 13.7mm	5.75" / 146.1mm	.800" / 20.3mm	.120" / 3.0mm



FAIRWAY CORING TINES

1F-756075	0.521" / 13.2mm	6" / 152.4mm	.741" / 18.8mm	.110" / 2.8mm
1F-756575	0.521" / 13.2mm	6.5" / 165.1mm	.741" / 18.8mm	.110" / 2.8mm
1F-876075	0.606" / 15.4mm	6" / 152.4mm	.866" / 22.0mm	.130" / 3.3mm
1F-876575	0.606" / 15.4mm	6.5" / 165.1mm	.866" / 22.0mm	.130" / 3.3mm



3/4" Mount *(continued)*

Solid Round Tines



Part #	Diameter	Length
2-255075	.25" / 6.4mm	5" / 127.0mm
2-256075	.25" / 6.4mm	6" / 152.4mm
2-375075	.375" / 9.5mm	5" / 127.0mm
2-376075	.375" / 9.5mm	6" / 152.4mm
2-505075	.5" / 12.7mm	5" / 127.0mm
2-506075	.5" / 12.7mm	6" / 152.4mm
2-507075	.5" / 12.7mm	7" / 177.8mm
2-625075	.625" / 15.9mm	5" / 127.0mm
2-626075	.625" / 15.9mm	6" / 152.4mm
2-627075	.625" / 15.9mm	7" / 177.8mm
2-755075	.75" / 19.1mm	5" / 127.0mm
2-756075	.75" / 19.1mm	6" / 152.4mm
2-757075	.75" / 19.1mm	7" / 177.8mm
2-106075	1" / 25.4mm	6" / 152.4mm

JOHN DEERE® / TORO® (will fit)

JOHN DEERE® / TORO® (will fit)

3/4" Mount (continued)

Solid Talon Tines



Part #	Diameter	Length
2T-376075	.375" / 9.5mm	6" / 152.4mm
2T-506075	.5" / 12.7mm	6" / 152.4mm
2T-756075	.75" / 19.1mm	6" / 152.4mm

Solid Venting Tines



2V-755075	.75" / 19.1mm	5" / 127.0mm
2V-756075	.75" / 19.1mm	6" / 152.4mm
2V-757075	.75" / 19.1mm	7" / 177.8mm

(will fit) **JOHN DEERE® / TORO®**

7/8" Mount



Part #	Core Diameter	Total Length	Outside Diameter	Wall Thickness
FAIRWAY CORING TINES				
1F-756587	.521" / 13.2mm	6.5" / 165.1mm	.741" / 18.8mm	.110" / 2.8mm
1F-876087	.606" / 15.4mm	6" / 152.4mm	.866" / 22.0mm	.130" / 3.3mm
1F-876587	.606" / 15.4mm	6.5" / 165.1mm	.866" / 22.0mm	.130" / 3.3mm

FAIRWAY CARBIDE CORING TINES

1FCH-875587	.590" / 15.0mm	5.55" / 141.0mm	.830" / 21.1mm	.120" / 3.0mm
-------------	----------------	-----------------	----------------	---------------



ECONOMY CORING TINES

1E-755787	.620" / 15.7mm	5.75" / 146.1mm	.875" / 22.2mm	.134" / 3.4mm
1E-625787	.540" / 13.7mm	5.75" / 146.1mm	.800" / 20.3mm	.120" / 3.0mm

7/8" Mount

Solid Round Tines



Part #	Diameter	Length
2-756087	.75" / 19.1mm	6" / 152.4mm
2-757087	.75" / 19.1mm	7" / 177.8mm
2-876087	.875" / 22.2mm	6" / 152.4mm
2-877087	.875" / 22.2mm	7" / 177.8mm

JOHN DEERE® / TORO®
(will fit)

TOLL FREE 866-929-9916 PHN 910-256-8974

RYAN GA®(JACOBSEN)(will fit)

RYAN GA®(JACOBSEN)
(will fit)

1/2" Mount



Part #	Core Diameter	Total Length	Outside Diameter	Wall Thickness
VIPER NOSE QUAD TINES				
1QV-254550	.266" / 6.8mm	4.5" / 114.3mm	.392" / 10.1mm	.063" / 1.6mm
1QV-374550	.310" / 7.9mm	4.5" / 114.3mm	.454" / 11.5mm	.072" / 1.8mm
1QV-524550	.418" / 10.6mm	4.5" / 114.3mm	.562" / 14.3mm	.072" / 1.8mm

1/2" Mount (continued)

Solid Round Tines



Part #	Diameter	Length
2-255050	.250" / 6.4mm	5" / 127.0mm
2-375050	.375" / 9.5mm	5" / 127.0mm

Solid Talon Tines

2T-374750	.375" / 9.5mm	4.75" / 120.7mm
-----------	---------------	-----------------

Solid Venting Tines

2V-754750	.750" / 12.7mm	4.75" / 120.7mm
-----------	----------------	-----------------

(will fit) **REDEXIM VERTI-DRAIN®**



REDEXIM VERTI-DRAIN®
(will fit)

5/16" Mount



Part #	Core Diameter	Total Length	Outside Diameter	Wall Thickness
VIPER NOSE QUAD TINE				
1DV-134331	.160" / 4.1mm	4.36" / 110.7mm	.275" / 7.0mm	.040" / 1.0mm
1DV-376031	.310" / 7.9mm	6" / 152.4mm	.500" / 12.7mm	.072" / 1.8mm

12mm Mount



Part #	Core Diameter	Total Length	Tube Length	Outside Diameter	Wall Thickness
PREMIUM CORING TINES					
1D-628247	.390" / 9.9mm	8.2" / 208.3mm	7" / 177.8mm	.625" / 15.9mm	.075" / 1.9mm
1D-877347	.521" / 13.2mm	7.2" / 182.9mm	6" / 152.4mm	.875" / 22.2mm	.125" / 3.2mm
1D-879347	.521" / 13.2mm	9.2" / 233.7mm	8" / 203.2mm	.875" / 22.2mm	.125" / 3.2mm
1D-107347	.606" / 15.4mm	7.2" / 182.9mm	6" / 152.4mm	1" / 25.4mm	.141" / 3.6mm

CARBIDE CORING TINES

1DC-628247	.395" / 10.0mm	8.375" / 212.7mm	7.375" (187.3mm)	.625" / 15.9mm	.070" / 1.8mm
------------	----------------	------------------	------------------	----------------	---------------



VIPER DEEP CORING TINE

1DV-626247	.390" / 9.9mm	6.2" / 157.5mm	5" / 127.0mm	.625" / 15.9mm	.075" / 1.9mm
1DV-628247	.390" / 9.9mm	8.2" / 208.3mm	7" / 177.8mm	.625" / 15.9mm	.075" / 1.9mm

TOLL FREE 866-929-9916 PHN 910-256-8974

REDEXIM VERTI-DRAIN® (will fit)

REDEXIM VERTI-DRAIN®
(will fit)

18mm Mount



Part #	Core Diameter	Total Length	Tube Length	Outside Diameter	Wall Thickness
1D-878070	.521" / 13.2mm	8" / 203.2mm	6" / 152.4mm	.875" / 22.2mm	.125" / 3.2mm
1D-8710070	.521" / 13.2mm	10" / 254.0mm	8" / 203.2mm	.875" / 22.2mm	.125" / 3.2mm
1D-108070	.606" / 15.4mm	8" / 203.2mm	6" / 152.4mm	1" / 25.4mm	.141" / 3.6mm
1D-1010070	.606" / 15.4mm	10" / 254.0mm	8" / 203.2mm	1" / 25.4mm	.141" / 3.6mm
1D-1012070	.606" / 15.4mm	12" / 304.8mm	10" / 254.0mm	1" / 25.4mm	.141" / 3.6mm

CTI Onyx



Part #	Core Diameter	Total Length	Tube Length	Outside Diameter	Wall Thickness
1DE-1012070	.606" / 15.4mm	12" / 304.8mm	10" / 254.0mm	1" / 25.4mm	.141" / 3.6mm

Deep Vent Tines



Part #	Diameter	Length
--------	----------	--------

12mm Mount

2V-757047	.750" / 19.1mm	7" / 177.8mm
2V-759547	.750" / 19.1mm	9.5" / 241.3mm

18mm Mount

2V-7511070	.750" / 19.1mm	11" / 279.4mm
------------	----------------	---------------



REDEXIM VERTI-DRAIN®/TORO SR®

Deep Solid Round Tines



Part #	Diameter	Length
--------	----------	--------

5/16" Mount

2-318031	.3125" / 7.9mm	8" / 203.2mm
2-3110031	.3125" / 7.9mm	10" / 254.0mm
2-3111531	.3125" / 7.9mm	11.5" / 292.1mm

12mm Mount

2-478047	.500" / 12.7mm	8" / 203.2mm
2-4710047	.500" / 12.7mm	10" / 254.0mm
2-4712047	.500" / 12.7mm	12" / 304.8mm
2-4714047	.500" / 12.7mm	14" / 355.6mm
2-6212547	.625" / 15.9mm	12.5" / 317.5mm

18mm Mount

2-7012770	.750" / 19.1mm	12.75" / 323.9mm
2-7014870	.750" / 19.1mm	14.75" / 374.7mm
2-7016870	.750" / 19.1mm	16.75" / 425.5mm

24mm Dimple Mount for Verti-Drain Only

2-1014010	1" / 25.4mm	14" / 355.6mm
2-1016010	1" / 25.4mm	16" / 406.4mm
2-1018010	1" / 25.4mm	18" / 457.2mm



TORO SR[®] (will fit)

TORO SR[®]
(will fit)

Deep Coring Tines



Part #	Core Diameter	Total Length	Tube Length	Outside Diameter	Wall Thickness
--------	---------------	--------------	-------------	------------------	----------------

12mm Mount

PREMIUM CORING TINES

1D-629047	.390" / 9.9mm	9" / 228.6mm	7" / 177.8mm	.625" / 15.9mm	.065" / 1.7mm
1D-818047	.461" / 11.7mm	8" / 203.2mm	6" / 152.4mm	.813" / 20.6mm	.105" / 2.7mm
1D-878047	.521" / 13.2mm	8" / 203.2mm	6" / 152.4mm	.875" / 22.2mm	.125" / 3.2mm
1D-8710047	.521" / 13.2mm	10" / 254.2mm	8" / 203.2mm	.875" / 22.2mm	.125" / 3.2mm
1D-108047	.606" / 15.4mm	8" / 203.2mm	6" / 152.4mm	1" / 25.4mm	.141" / 3.6mm

CARBIDE CORING TINES

1DC-629047	.390" / 9.9mm	9" / 228.6mm	7" / 177.8mm	.625" / 15.9mm	.065" / 1.7mm
------------	---------------	--------------	--------------	----------------	---------------

18mm Mount

1D-878070	.521" / 13.2mm	8" / 203.2mm	6" / 152.4mm	.875" / 22.2mm	.125" / 3.2mm
1D-8710070	.521" / 13.2mm	10" / 254.2mm	8" / 203.2mm	.875" / 22.2mm	.125" / 3.2mm
1D-108070	.606" / 15.4mm	8" / 203.2mm	6" / 152.4mm	1" / 25.4mm	.141" / 3.6mm
1D-1010070	.606" / 15.4mm	10" / 254.2mm	8" / 203.2mm	1" / 25.4mm	.141" / 3.6mm
1D-1012070	.606" / 15.4mm	12" / 304.8mm	10" / 254.0mm	1" / 25.4mm	.141" / 3.6mm

CTI Onyx



Part #	Core Diameter	Total Length	Tube Length	Outside Diameter	Wall Thickness
1DE-1012070	.606" / 15.4mm	12" / 304.8mm	10" / 254.0mm	1" / 25.4mm	.141" / 3.6mm



Deep Coring Tines



5/16" Dimple Mount

Part #	Core Diameter	Total Length	Tube Length	Outside Diameter	Wall Thickness
--------	---------------	--------------	-------------	------------------	----------------

VIPER NOSE QUAD TINE

1DVW-376031	.310" / 7.9mm	6" / 152.4mm	5" / 127.0mm	.500" / 12.7mm	.072" / 1.8mm
-------------	---------------	--------------	--------------	----------------	---------------



12mm Dimple Mount

PREMIUM CORING TINES

1DW-628147	.390" / 9.9mm	8.1" / 205.7mm	7" / 177.8mm	.625" / 15.9mm	.075" / 1.9mm
1DW-877347	.521" / 13.2mm	7.3" / 185.4mm	6" / 152.4mm	.875" / 22.2mm	.125" / 3.2mm
1DW-879347	.521" / 13.2mm	9.3" / 236.2mm	8" / 203.2mm	.875" / 22.2mm	.125" / 3.2mm
1DW-107347	.606" / 15.4mm	7.3" / 185.4mm	6" / 203.2mm	1" / 25.4mm	.141" / 3.6mm

CARBIDE CORING TINES

1DCW-628447	.395" / 10.0mm	8.4" / 213.4mm	7.2" / 182.9mm	.625" / 15.9mm	.070" / 1.8mm
-------------	----------------	----------------	----------------	----------------	---------------



VIPER DEEP CORING TINE

1DVW-526047	.418" / 10.6mm	6" / 152.4mm	4.7" / 119.4mm	.562" / 14.3mm	.072" / 1.8mm
1DVW-628147	.390" / 9.9mm	8.1" / 205.7mm	7" / 177.8mm	.625" / 15.9mm	.075" / 1.9mm



WIEDENMANN® (will fit)

WIEDENMANN® (will fit)

Solid Tines



5/16" Dimple Mount

Part #	Diameter	Length
2W-319031	.3125" / 7.9mm	9" / 228.6mm
2W-3111031	.3125" / 7.9mm	11.35" / 288.3mm

12mm Dimple Mount

2W-4710047	.500" / 12.7mm	9.61" / 244.1mm
2W-4712047	.500" / 12.7mm	12.16" / 308.9mm
2W-4714047	.500" / 12.7mm	14.12" / 358.6mm

18mm Screw Mount

2W-7010870	.750" / 19.1mm	10.75" / 273.1mm
2W-7013370	.750" / 19.1mm	13.25" / 336.6mm
2W-7012070G	.750" / 19.1mm	12" / 304.8mm
2W-1013370	1" / 25.4mm	13.25" / 336.6mm

for GXi

Deep Vent Tines



12mm Dimple Mount

2WV-759547	.750" / 19.1mm	9.5" / 241.3mm
------------	----------------	----------------



Part #	Core Diameter	Total Length	Tube Length	Outside Diameter	Wall Thickness
--------	---------------	--------------	-------------	------------------	----------------

1:10 Threaded Mount

PREMIUM CORING TINES

1DW-8110770	.461" / 11.7mm	10.7" / 269.2mm	8" / 203.2mm	.813" / 20.6mm	.105" / 2.7mm
1DW-1010670	.606" / 15.4mm	10.6" / 269.2mm	8" / 203.2mm	1" / 25.4mm	.141" / 3.6mm
1DW-1012670	.606" / 15.4mm	12.6" / 320.0mm	10" / 254.0mm	1" / 25.4mm	.141" / 3.6mm

1:4 Threaded Mount for GXi

1DW-1010370G	.606" / 15.4mm	10.3" / 261.6mm	8" / 203.2mm	1" / 25.4mm	.141" / 3.6mm
1DW-1012370G	.606" / 15.4mm	12.3" / 312.4mm	10" / 254.0mm	1" / 25.4mm	.141" / 3.6mm

CTI Onyx



Part #	Core Diameter	Total Length	Tube Length	Outside Diameter	Wall Thickness
--------	---------------	--------------	-------------	------------------	----------------

1:10 Threaded Mount

1DEW-1012670	.606" / 15.4mm	12.6" / 320.0mm	10" / 254.0mm	1" / 25.4mm	.125" / 3.2mm
--------------	----------------	-----------------	---------------	-------------	---------------

CTI



PHOENIX EXTREME[®]

Phoenix-X Bedknives are designed to deliver long-lasting and optimal results for championship-level playing conditions.



- ✓ Unbelievably flat
- ✓ Absolutely straight
- ✓ Stainless steel

TORO® BEDKNIVES



- ✓ **Absolutely Straight**
- ✓ **Unbelievably Flat**
- ✓ **Stainless Steel - No Rust**
- ✓ **Stainless Steel Screws Included**

Part #	OEM P/N	Description	Holes	Min. Cut Height	Grind Angles Top & Front Face
32PX-260	NA	Phoenix-X 21" Champion Cut	13	0.050" / 1.27mm	3° & 15°
32PX-261	NA	Phoenix-X 21" Ultra Micro Cut - Max Drag Clearance	13	0.098" / 2.49mm	3° & 15°
32PX-262	93-4262	Phoenix-X 21" Micro	13	0.098" / 2.49mm	3° & 15°
32PX-303	108-4303	Phoenix-X 21" Micro - Extended Cut	13	0.098" / 2.49mm	3° & 15°
32PX-263	93-4263	Phoenix-X 21" Tournament	13	0.115" / 2.92mm	3° & 15°
32PX-264	93-4264	Phoenix-X 21" Low Cut	13	0.135" / 3.43mm	3° & 15°
32PX-392	94-6392	Phoenix-X 21" High Cut	13	0.175" / 4.45mm	3° & 15°

TOLL FREE 866-929-9916 PHN 910-256-8974

TORO® BEDKNIVES (will fit)

TORO® BEDKNIVES (will fit)

Part #	OEM P/N	Description	Holes	Min. Cut Height	Grind Angles Top & Front Face
32P-261-18	98-7261	Phoenix 18" Micro Cut	11	0.098" / 2.49mm	5° & 15°
32-261	98-7261	18" Micro Cut	11	0.115" / 2.92mm	6° & 8°
32P-261	NA	Phoenix 21" Micro Cut - Max Drag Clearance	13	0.098" / 2.49mm	5° & 15°
32P-262	93-4262	Phoenix 21" Micro Cut	13	0.098" / 2.49mm	5° & 15°
32P-303	108-4303	Phoenix 21" Micro - Extended Cut	13	0.098" / 2.49mm	5° & 15°
32-262	93-4262	21" Micro-Cut	13	0.115" / 2.92mm	5° & 8°
32P-263	93-4263	Phoenix 21" Tournament Cut	13	0.115" / 2.92mm	5° & 15°
32-263	93-4263	21" Tournament	13	0.125" / 3.18mm	5° & 8°
32P-264	93-4264	Phoenix 21" Low Cut	13	0.135" / 3.43mm	5° & 15°
32-264	93-4264	21" Low-Cut	13	0.135" / 3.43mm	6° & 8°
32P-392	94-6392	Phoenix 21" High Cut	13	0.175" / 4.45mm	5° & 15°
32-396	94-6396	21" High Cut	7	0.198" / 5.03mm	6° & 8°
32-610	63-8610	21" Fairway Cut	7	0.250" / 6.35mm	5° & 5°

(will fit) **TORO® BEDKNIVES**



TORO® BEDKNIVES
(will fit)

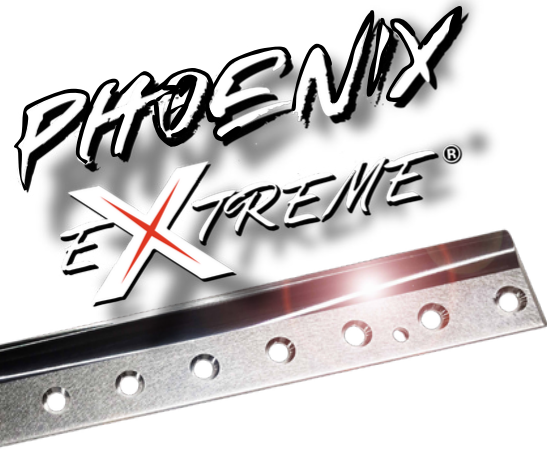
Part #	OEM P/N	Description	Holes	Min. Cut Height	Grind Angles Top & Front Face
32P-167	121-3167/ 130-4745	Phoenix 18" Low Cut Fairway	6	0.250" / 6.35mm	10° & 5°
32P-096	108-9096	Phoenix Fairway 22" Low Cut	8	0.250" / 6.35mm	3.33° & 6°
32-096	108-9096	22" Fairway Cut	8	0.375" / 9.53mm	5° & 5°
32-015	93-9015	26" Low Cut	16	0.125" / 3.18mm	6° & 8°
32-646	104-2646	26" High Cut	16	0.250" / 6.35mm	6° & 8°
32-890	72-0480/ 59-5890	30" Fairway Cut	10	0.375" / 9.53mm	5° & 5°
32-388	114-9388	27" Fairway Cut	10	0.375" / 9.53mm	5° & 5°
32-079	94-5079	32" Low Cut	12	0.375" / 9.53mm	6° & 8°

BEDKNIFE SCREWS

32-4910	M57-4910	100 Bedknife Screws	Stainless Steel Screws		
---------	----------	---------------------	------------------------	--	--

TOLL FREE 866-929-9916 PHN 910-256-8974

JOHN DEERE® BEDKNIVES



- ✓ **Absolutely Straight**
- ✓ **Unbelievably Flat**
- ✓ **Stainless Steel - No Rust**
- ✓ **Stainless Steel Screws Included**

Part #	OEM P/N	Description	Holes	Min. Cut Height	Grind Angles Top & Front Face
30PX-260	NA	Phoenix-X 22" Champion Cut	13	0.050" / 1.27mm	7° & 90°
30PX-351	MT7351 UC28163	Phoenix-X 22" Super Tournament - Max Drag Clearance	13	0.098" / 2.49mm	7° & 90°
30PX-869	ET4869	Phoenix-X 22" Super Tournament	13	0.098" / 2.49mm	7° & 90°
30PX-534	ET17534 UC18869	Phoenix-X 22" Tournament	13	0.115" / 2.92mm	7° & 90°
30PX-533	ET17533 UC18873	Phoenix-X 22" Standard Cut	13	0.135" / 3.43mm	7° & 90°
30PX-532	ET17532 UC28156	Phoenix-X 22" High Cut	13	0.175" / 4.45mm	7° & 90°

(will fit) **JOHN DEERE® BEDKNIVES**



JOHN DEERE® BEDKNIVES
(will fit)

Part #	OEM P/N	Description	Holes	Min. Cut Height	Grind Angles Top & Front Face
30P-944	MT6944	Phoenix 18" Super Tournament	11	0.098" / 2.49mm	8° & 90°
30-846	MT4846	18" Tournament	11	0.115" / 2.92mm	6° & 8°
30PX-351	MT7351 UC28163	Phoenix 22" Super Tournament Max Drag Clearance	13	0.098" / 2.49mm	8° & 90°
30P-869	ET4869	Phoenix 22" Super Tournament	13	0.098" / 2.49mm	8° & 90°
30P-534	ET17534 UC18869	Phoenix 22" Tournament	13	0.115" / 2.92mm	8° & 90°
30P-534	ET17534 UC18869	22" Tournament	13	0.115" / 2.92mm	6° & 8°
30P-533	ET17533 UC18873	Phoenix 22" Standard	13	0.135" / 3.43mm	8° & 90°
30-533	ET17533 UC18873	22" Standard	13	0.125" / 3.18mm	6° & 8°
30P-532	ET17532 UC28156	Phoenix 22" High Cut	13	0.175" / 4.45mm	8° & 90°
30-532	ET17532 UC28156	22" High Cut	13	0.135" / 3.43mm	6° & 8°
30P-767	ET17767 UC23562	Phoenix 22" Fairway	13	0.270" / 6.86mm	5° & 6°
30-767	ET17767 UC23562	22" Fairway	13	0.350" / 8.89mm	5° & 5°

TOLL FREE 866-929-9916 PHN 910-256-8974

JOHN DEERE® BEDKNIVES (will fit)

JOHN DEERE® BEDKNIVES (will fit)

Part #	OEM P/N	Description	Holes	Min. Cut Height	Grind Angles Top & Front Face
30P-928	MT1928	Phoenix 22" Standard Cut Fairway	9	0.240" / 6.10mm	5° & 6°
30-751	ET17751 UC23563	22" Standard	9	0.375" / 9.53mm	5° & 5°
30P-947	MT6947	Phoenix 26" Standard Cut	15	0.135" / 3.43mm	15° & 6°
30-947	MT6947	26" Standard Bedknife	15	0.125" / 3.18mm	6° & 8°
30-752	ET17752 UC23481	26" Standard Fairway	10	0.375" / 9.53mm	5° & 5°
30-973	MT1973	30" Standard Bedknife	12	0.375" / 9.53mm	5° & 5°

BEDKNIFE SCREWS

30-7194	M21-7194	100 Bedknife Screws	Stainless Steel Screws		
30-5055		25 Bedknife Screws w/ Nut	Fairway Mower Screw & Nut <i>*For 30P-928, 30-751, & 30-752*</i>		

(will fit) **JACOBSEN® BEDKNIVES**



JACOBSEN® BEDKNIVES
(will fit)

Part #	OEM P/N	Description	Holes	Min. Cut Height	Grind Angles Top & Front Face
31-902	4118902	18" Medium Section	11	0.250" / 6.35mm	5° & 5°
31-888	5002888	18" Super Tournament	11	0.125" / 3.18mm	6° & 8°
31-476	503476	19" Tournament	11	0.125" / 3.18mm	6° & 8°
31-984	2810984	19" Super Tournament	11	0.115" / 2.92mm	6° & 8°
31P-887	5002887	22" Phoenix Super Tournament	13	0.098" / 2.49mm	5° & 90°
31-887	5002887	22" Super Tournament	13	0.115" / 2.92mm	6° & 8°
31P-479	503479	22" Phoenix Tournament	13	0.115" / 2.92mm	8° & 90°
31-479	503479	22" Tournament	13	0.125" / 3.18mm	6° & 8°
31P-478	503478	22" Phoenix Low Profile	13	0.135" / 3.43mm	8° & 90°
31-478	503478	22" Low Profile	13	0.135" / 3.43mm	6° & 8°
31-477	503477	22" High Profile	13	0.175" / 4.45mm	8° & 8°
31-460	503460	22" Heavy Section	13	0.325" / 8.26mm	5° & 5°
31-284	554284	26" Heavy Section	11	0.375" / 9.53mm	5° & 5°
31-550	503550	30" Heavy Section	13	0.250" / 6.35mm	5° & 5°

BEDKNIFE SCREWS

31-9138	100 Bedknife Screws	Stainless Steel Screws
---------	---------------------	------------------------

TOLL FREE 866-929-9916 PHN 910-256-8974



TORO® REELS (will fit)

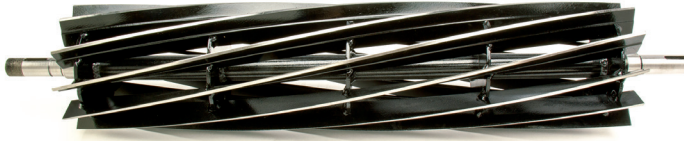


TORO® REELS

(will fit)

Part #	OEM P/N	Description	Works On
TORO® MACHINES			
32-R6097	93-6097 / 127-2182 / 132-7313 (EdgeSeries)	5" x 21", 11 Blade 12.7cm x 53.3cm, 11 Blade	Greensmaster 1000, 1010, and 2000 Intergral Cutting Units
32-R4104	119-4104 / 127-2201 / 137-8512 (EdgeSeries Reel +)	5" x 21", 11 Blade 12.7cm x 53.3cm, 11 Blade	Greensmaster Flex / eFlex 2100 and 2120 (2012 and newer)
32-R4105	119-4105 / 127-2202 / 137-8513 (EdgeSeries Reel +)	5" x 21", 14 Blade 12.7cm x 53.3cm, 14 Blade	
32-R5792	105-5792 / 127-2194	5" x 21", 11 Blade 12.7cm x 53.3cm, 11 Blade	Greensmaster 3000, 3100, and 3200 DPA Cutting Units (2011 and older)
32-R9071	108-9071 / 127-2065 / 137-8416 (Reel +)	5" x 22", 8 Blade 12.7cm x 55.9cm, 8 Blade	Reelmaster 5210 and 5410 DPA Cutting Units
32-R9073	108-9073 / 127-2084 / 137-8432 (Reel +)	7" x 22", 8 Blade 17.8cm x 55.9cm, 8 Blade	Reelmaster 5510, 5610, 6500, and 6700 DPA Cutting Units
32-R9074	108-9074 / 127-2085 / 137-8433 (Reel +)	7" x 22", 11 Blade 17.8cm x 55.9cm, 11 Blade	

(will fit) **JOHN DEERE® REELS**



JOHN DEERE® REELS

(will fit)

Part #	OEM P/N	Description	Works On
--------	---------	-------------	----------

JOHN DEERE® MACHINES

30-R2883	AMT2883	5" x 22", 7 Blade 12.7cm x 55.9cm, 7 Blade	2243 and 2500 Professional Greensmower; 3215A, 3235A, 7500, and 8500 Lightweight Fairway Mower
30-R2885	AMT2885	5" x 22", 11 Blade 12.7cm x 55.9cm, 11 Blade	
30-R9350	TCA19350	5" x 22", 7 Blade 12.7cm x 55.9cm, 7 Blade	220 E-Cut Walk-Behind Greensmower; 2500B and 2500E Riding Greensmower; 7500 and 8500 Fairway Mower
30-R9351	TCA19351	5" x 22", 11 Blade 12.7cm x 55.9cm, 11 Blade	
30-R3621	TCA23621	5" x 22", 14 Blade 12.7cm x 55.9cm, 14 Blade	
30-R9353	TCA19353	7" x 22", 8 Blade 17.8cm x 55.9cm, 8 Blade	7700 and 8700 Fairway Mower
30-R9354	TCA19354	7" x 22", 10 Blade 17.8cm x 55.9cm, 10 Blade	

TOLL FREE 866-929-9916 PHN 910-256-8974

JACOBSEN® REELS



JACOBSEN® REELS

Part #	OEM P/N	Description	Works On
--------	---------	-------------	----------

JACOBSEN® MACHINES

31-R3053	5003053	5" x 22", 7 Blade 12.7cm x 55.9cm, 7 Blade	Eclipse 322, GP400, G-Plex, and E-Plex; LF-128 (Left), LF-3400 (Left), LF-4675 (Left), LF-510 (Left), LF-550 (Left), and LF-550H (Left)
31-R3054	5003054	5" x 22", 7 Blade 12.7cm x 55.9cm, 7 Blade	GK 5 and GK 6 Electric; LF-128 (Right), LF- 3400 (Right), LF-4675 (Right), LF-510 (Right), LF-550 (Right), and LF-550H (Right)
31-R1101	5001101	5" x 22", 11 Blade 12.7cm x 55.9cm, 11 Blade	Eclipse 322, Eclipse 122F, G-Plex 3, E-Plex, GP400, GK 4 (Left, 2 required)
31-R1102	5001102	5" x 22", 11 Blade 12.7cm x 55.9cm, 11 Blade	GK 4 (Right, 1 required); GK 5 and GK 6
31-R0472	2810472	7" x 22", 11 Blade 17.8cm x 55.9cm, 11 Blade	LF-135, LF-3407, LF-3800, LF4677, LF570, LF570H



Oregon #	OEM P/N	Machine	Length	Arbor
----------	---------	---------	--------	-------

TORO® MACHINES

OR94-052	107-0235-03	Toro 3500D/3505D/4000D/4500D/4700D	27" 68.6cm	1/2" 12.7mm
OR96-741	104-5183	Toro 3500D/3505D/4000D/4500D/4700D	27" 68.6cm	1/2" 12.7mm
OR94-045	92-5608	Toro 4000D/4100D/4110D/4300D	21 11/16" 55.1cm	1/2" 12.7mm
OR96-708	107-0241	Toro 4000D/4100D/4110D/4300D	21 11/16" 55.1cm	1/2" 12.7mm
OR94-055	105-7718 & 108-1114	Toro (60" cut) Turbo Force Deck	20 1/2" 52.1cm	5/8" 15.9mm
OR94-011	29-5530	Toro 72" cut Heavy Duty Left Hand	25" 63.5cm	3/4" 19.1mm
OR94-074	110-0621	Toro Groundsmaster 3280-D3320	24 1/2" 62.2cm	1/2" 12.7mm
OR94-071	110-0622 & 110-0624	Toro Groundsmaster 3280-D3320	24 1/2" 62.2cm	1/2" 12.7mm

Oregon #	OEM P/N	Machine	Length	Arbor
----------	---------	---------	--------	-------

JOHN DEERE® MACHINES

OR92-114	TCU15882	John Deere 1453 72" cut, 7-Iron deck	25" 63.5cm	7/8" 22.2mm
OR396-743	EPC201693 & M141669	John Deere 1453 72" cut, 7-Iron deck	25" 63.5cm	7/8" 22.2mm

Mulching Blades

Made by Oregon, Portland, OR USA

ROTARY MOWER BLADES



ROTARY MOWER BLADES

Oregon #	OEM P/N	Machine	Length	Arbor
----------	---------	---------	--------	-------

JACOBSEN® MACHINES

OR91-591	4137186	Jacobsen AR-5/522	22 5/16" / 56.7cm	1/2" / 12.7mm
OR91-364	JT391040	Jacobsen HR511, Right Hand cut, 3 Per Deck	23" / 58.4cm	1/2" / 12.7mm
OR91-363	JT391039	Jacobsen HR511, Left Hand cut, 4 Per Deck	23" / 58.4cm	1/2" / 12.7mm
OR96-795	4186852	Jacobsen HR511, Right Hand cut, 3 Per Deck	23" / 58.4cm	1/2" / 12.7mm
OR96-696	JT391039	Jacobsen HR511, Left Hand cut, 4 Per Deck	23" / 58.4cm	1/2" / 12.7mm

LASTEC® MACHINES

OR96-347	063265 & P322	Lastec 61" cut 2261/2661/2861/2961 and EF 100 Series	21" / 53.3cm	5/8" / 15.9mm
----------	------------------	---	--------------	---------------

Mulching Blades

Made by Oregon, Portland, OR USA

OTHER AVAILABLE PRODUCTS

We are very proud to make available the following quality brands. If you wish to place an order, please provide the correct OEM part number and quantity for pricing to

sales@ceresturf.com



SPECIALTY PARTS



SPECIALTY PARTS

Viper Hand Tool



Part #	Description
4-VHT	Viper Hand Tool with 10 each Viper Quad Tines, powder coated. Shipped with 1/8" MiniQuad or alternative 3/8" mount tine.
4-VHT-2	Viper Hand Tool with 10 each Viper Quad Tines, powder coated with 5" Viper Quad Tines, 10 each 1/8", 1/4", 3/8", 1/2" & 5/8"
4-VHT-3	Viper Hand Tool, powder coated with no tines

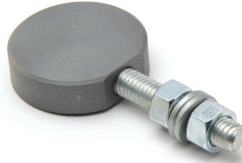
One-year warranty

TOLL FREE 866-929-9916 PHN 910-256-8974

SPECIALTY PARTS

No-Snag Rake Prong

Part #	Number
4-175A	As required



Closed Spoon Tines



Part #	Description	Length	ID	OD	Wall
1E-757575	1 bolt mount	7.5" / 190.5mm	.550" / 15.0mm	.790" / 20.1mm	0.120" / 3.0mm
1E-108510	2 bolt mount	8.5" / 215.9mm	.550" / 15.0mm	.790" / 20.1mm	0.120" / 3.0mm

Star Verti-Cut Blade



4-SVCB2	Star Verti-Cut Blade for John Deere & Toro	5" w/ 1.125" Hex Hole 127mm w/ 28.6mm Hex Hole	1mm
4-MT6987	John Deere Fairway Verti-Cut Blade OEM MT6987	7" w/ 1.375" Hex Hole 177.8mm w/34.9mm Hex Hole	2.5mm

Socket Driver Tools



(SOCKET ONLY, WRENCH NOT INCLUDED)

Part #	Description
4S-D101	John Deere Mowers
4S-J101	Jacobsen Greensmower
4S-J102	Jacobsen Fairway Mowers
4S-T101	Toro

SPECIALTY PARTS



Grinding Wheels



SPECIALTY PARTS

Part #	Description	Diameter	Depth	Arbor
9GW211111	Dressing Stick for Vulcan Grinding Wheels			
4H-515	Herculean Grinding Wheel Arbor - Bernhard Anglemaster 1000/2000	5.0" 12.7cm	1.5" 38.1mm	0.75" 19.05mm
4H-612	Herculean Grinding Wheel Arbor - for Foley, Peerless, and Neary machines	6.0" 15.2cm	1.0" 25.4mm	1.25" 31.8mm
4H-6135	Herculean Grinding Wheel Arbor - Bernhard 4000, OEM A6507	6.0" 15.2cm	1.0" 25.4mm	1.38" 35mm
4H-6158	Herculean Grinding Wheel Arbor - Foley machines	6.0" 15.2cm	1.0" 25.4mm	0.625" 15.9mm
4H-6235	Herculean Grinding Wheel Arbor - Bernhard Anglemaster 3000/40000/4000DX	6.0" 15.2cm	2.0" 50.8mm	1.38" 35mm

Premium Lapping Compound

Part #	Description
4G-50	Premium Lapping Compound - 50 grit / 30 lbs.
4G-80	Premium Lapping Compound - 80 grit / 30 lbs.
4G-100	Premium Lapping Compound - 100 grit / 30 lbs.
4G-120	Premium Lapping Compound - 120 grit / 30 lbs.
4G-180	Premium Lapping Compound - 180 grit / 30 lbs.
4G-220	Premium Lapping Compound - 220 grit / 30 lbs.

TOLL FREE 866-929-9916 PHN 910-256-8974

CTI Ceres Turf Premium LAPPING COMPOUND

100 GRIT 30 LBS.

Made in USA
Uniform Consistency
100% Pure, Virgin Silicon
Fungus and Bacteria Free

Non-toxic
Environmentally Safe
Water Soluble
Lot Controlled

866.929.9916

P/N: 4G-100
NOT FOR CONSUMPTION

Ceres Turf, Inc. • 2318 North 23rd Street, Wilmington, NC 28403 • 866.929.9916 • www.ceresturf.com

WARRANTY

WARRANTY

WARRANTY

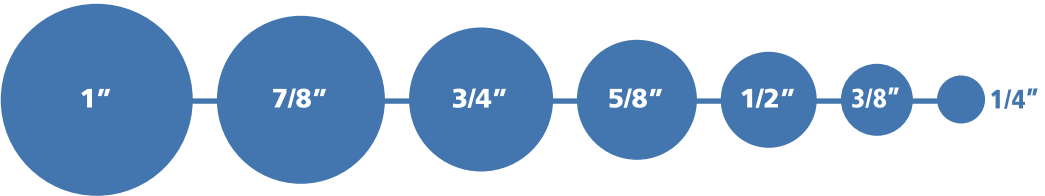
If a warranty issue is suspected, the first step is to save all the parts and packaging and then notify either the Ceres Turf Dealer or Distributor who sold you the parts or contact us directly at 1-866-929-9916 or 1-910-256-8974.

1. DO NOT try to return anything without an RA number! We will likely ask you to return the defective parts (and any unused parts) for testing. You must first receive a **RETURN AUTHORIZATION NUMBER** which must be displayed clearly on the outside of the box. If the part(s) are judged defective a full refund will be issued.
2. Save all packaging material.
3. Protect the suspect parts from any additional damage after use.
4. DO NOT RETURN ANY PARTS TO CTI WITHOUT an RA NUMBER!

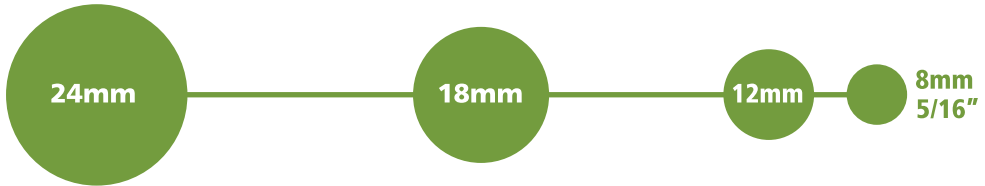
Please refer to our full Warranty Policy at: <http://www.ceresturf.com/product-warranty>

TINE MEASUREMENT

US Standard Sizes



Metric Sizes Deep Tine Mounts





CERES COTTAGE

PINEHURST, NC



Staywell-nc.com